

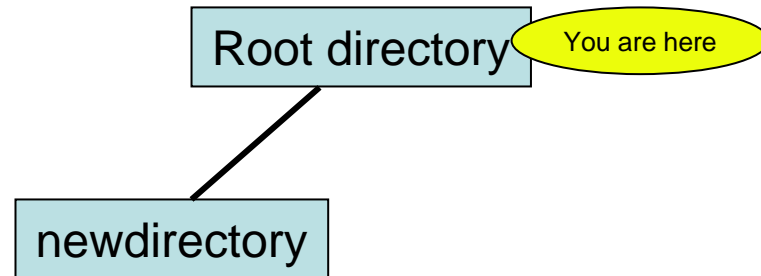
When you log into unix you are in the **root** directory



To create a new directory you must type:

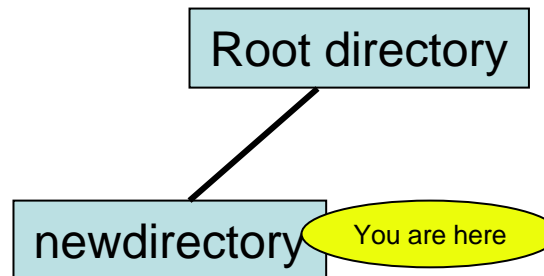
mkdir newdirectory

This will create a new directory call newdirectory. You may call your new directory anything you want



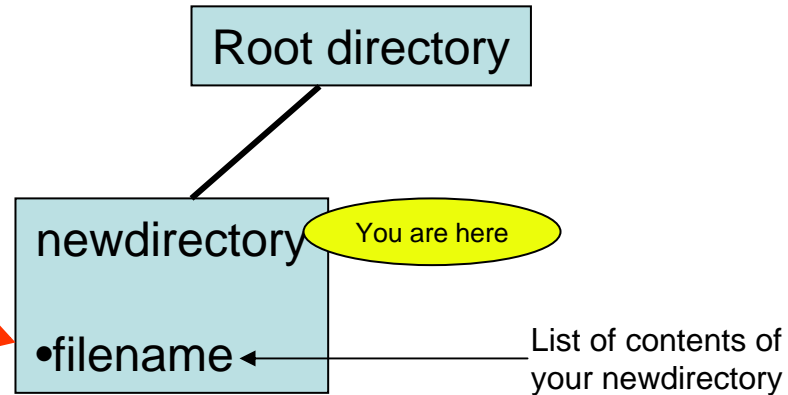
To move to your newly created directory you will type:

cd newdirectory



To create a file in your current directory you will type

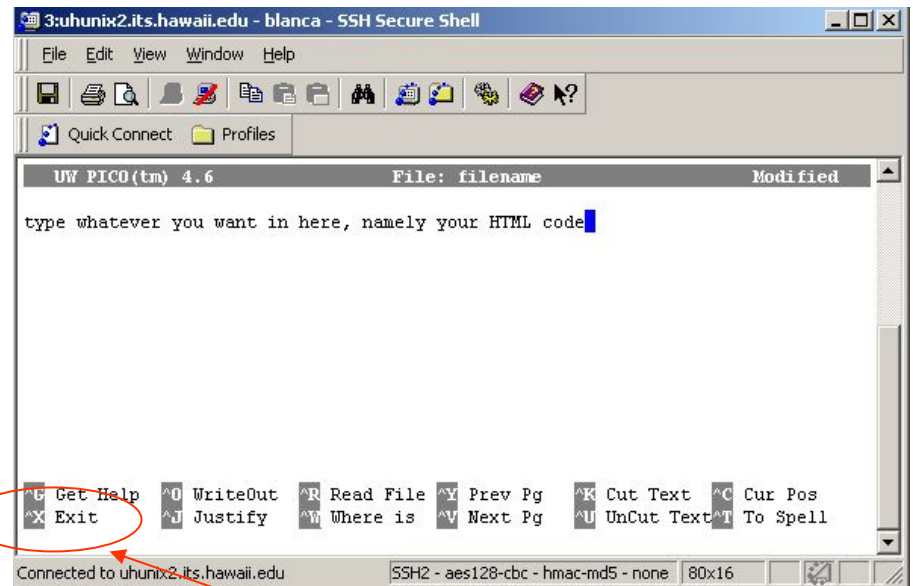
pico filename



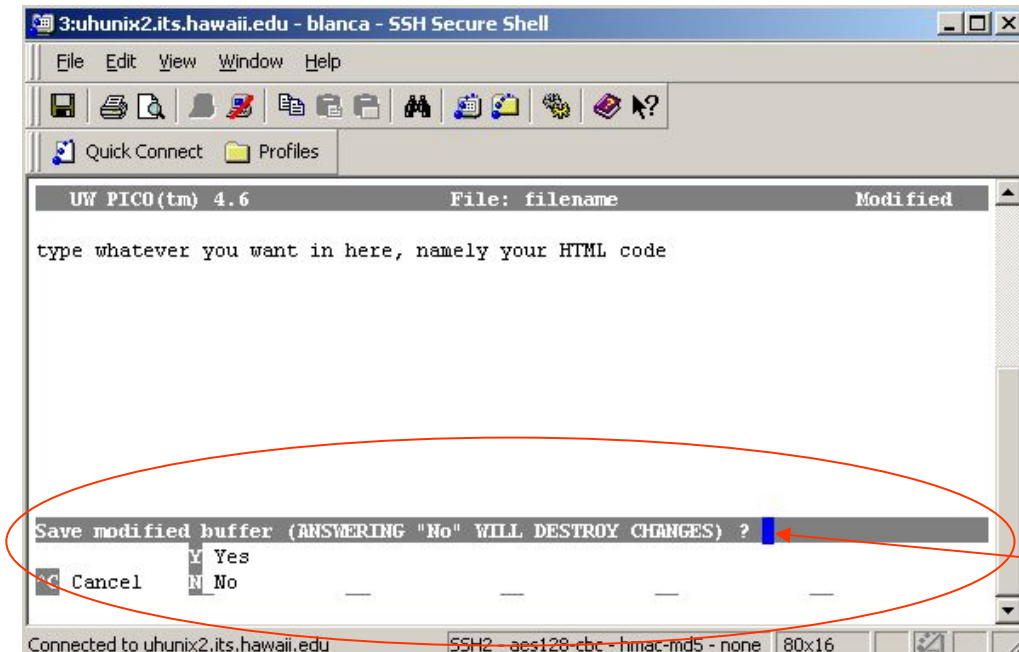
```
3:uhunix2.its.hawaii.edu - blanca - SSH Secure Shell
File Edit View Window Help
Quick Connect Profiles
Last login: Mon Aug 29 2005 13:29:38 -1000 from 166.122.33.140
#####
Unauthorized access is prohibited by law in accordance with Chapter 708,
Hawaii Revised Statutes; all use is subject to University of Hawaii
Executive Policy E2.210.
#####
  1:31pm  up 36 day(s), 18:58,  140 users,  load average: 1.25, 1.27, 1.29
uhunix2:/home/35/blanca% pico filename
```

When directories are first created they are empty.

You will now edit/type the file. Keep in mind that the mouse doesn't work here. You will use the arrow keys to move around.

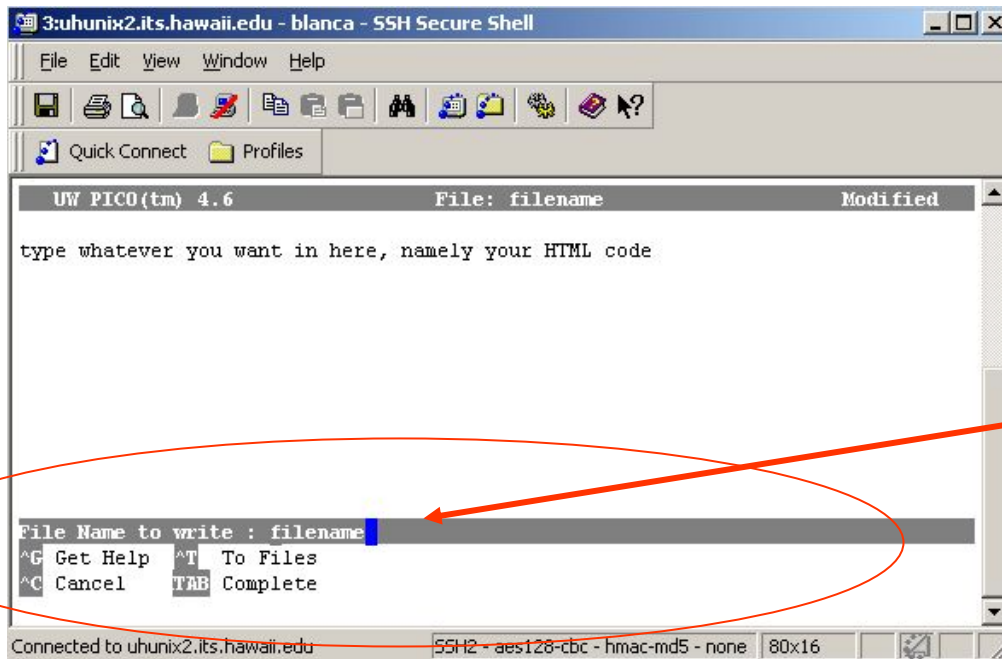


Once you are done editing/creating the file type **<ctrl>X**. You will find the list of commands at the bottom of the page very useful.



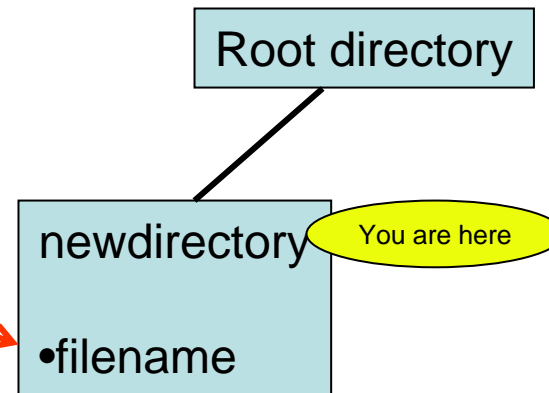
Type **Y** here to save the file.

Be sure to read what UNIX has to say.



Press <enter> to save the file under the specified name

Files are saved inside the directory in which you currently are. Since you are in newdirectory, your file filename was saved here.

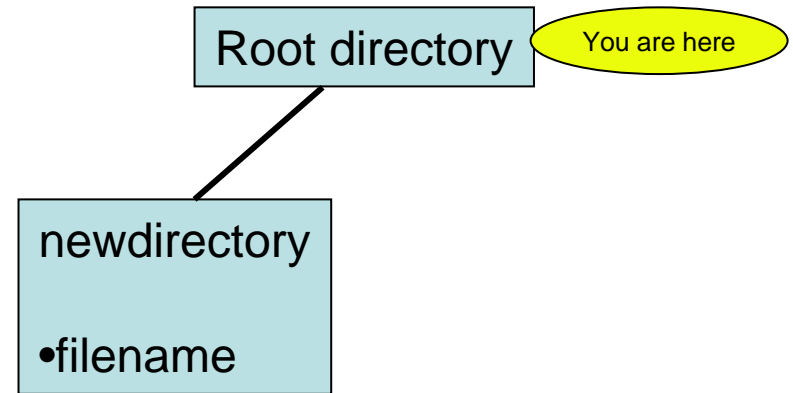


To go back to the root directory you will type **cd <enter>**

To go back to the root directory you will type:

cd <enter>

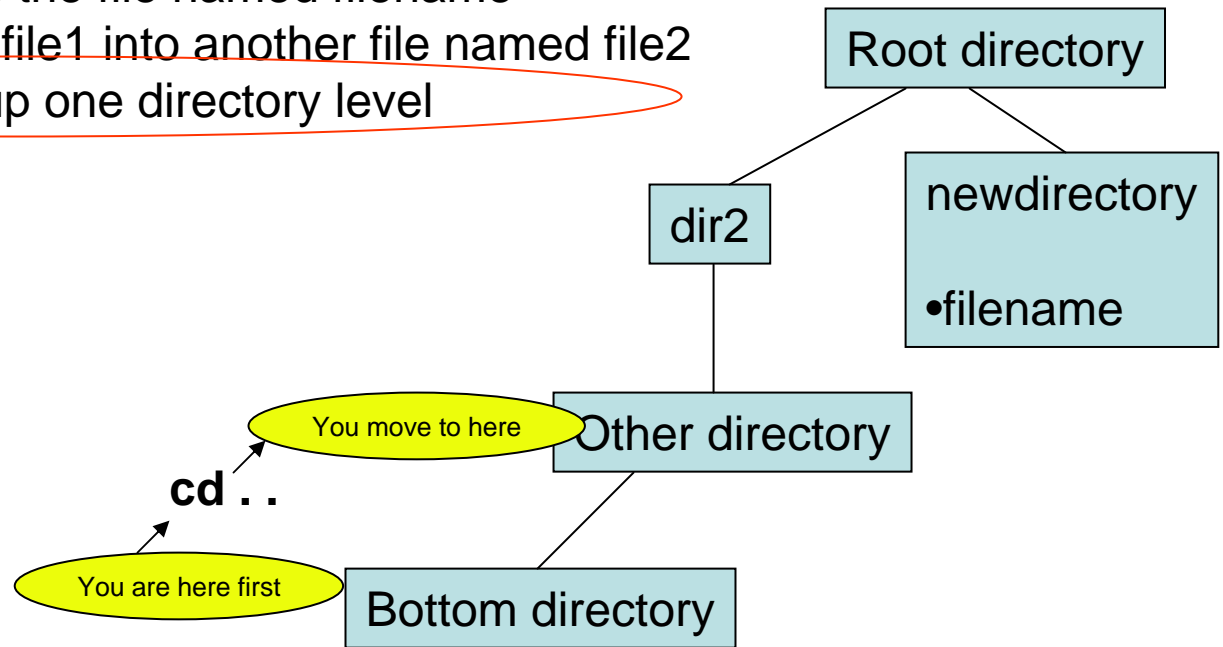
After this instruction you will be back in the root directory.



ls -la
rm filename
cp file1 file2
cd ..

To list all your files
deletes the file named filename
copies file1 into another file named file2
Goes up one directory level

Visual example here



mkdir dirname

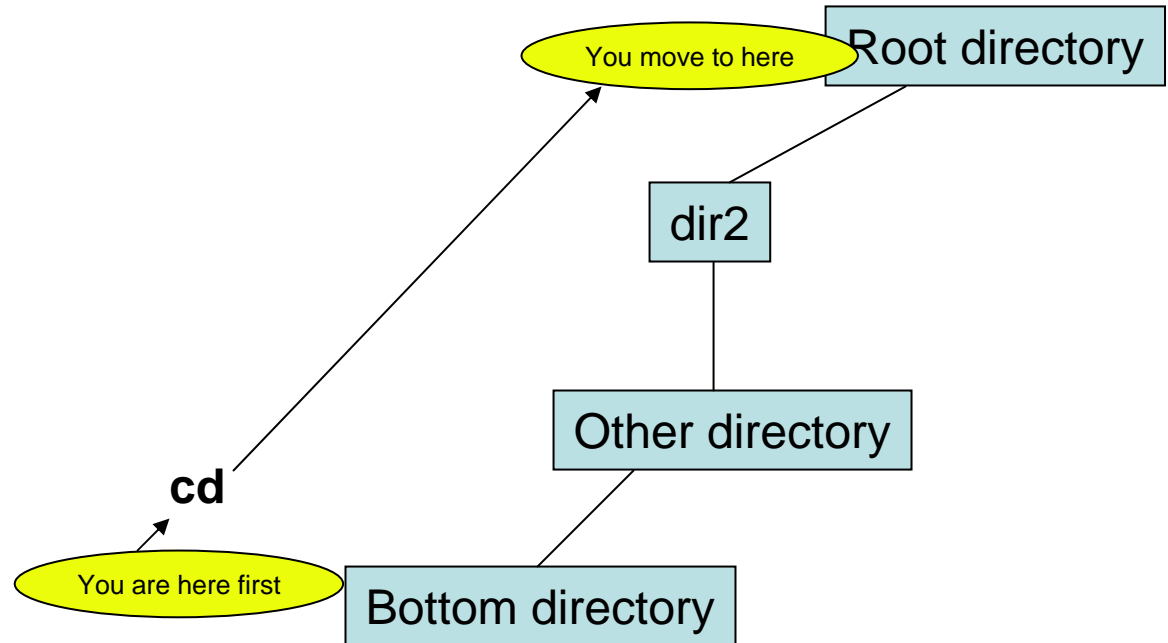
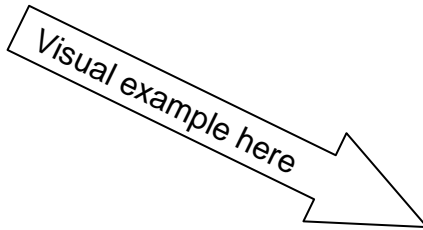
creates a directory called dirname under the current directory where you are currently located

rmdir dirname

deletes the directory named filename from under the directory where you are currently located

cd

moves all the way to the root directory



The only difference in cd to move one level up or all the way to the root is in the two dots