

How to Set Up a Home Network

By Sherilyn Nagano

Host Computer



Desktop



Laptop

Printer



Fax & Copy Machines



Internet Service Provider (ISP)

- Cable
- Digital Subscriber Line (DSL)

Router



Wireless



Wired

Wireless Router

| | Wireless-N | Wireless-G | Wireless-B | Wireless-A |
|---------------|------------|------------|------------|------------|
| Maximum Speed | 108 Mbps | 54 Mbps | 11 Mbps | 54 Mbps |
| Range | 300'-450' | 100'-150' | 100'-150' | 25'-75' |

Wired Router

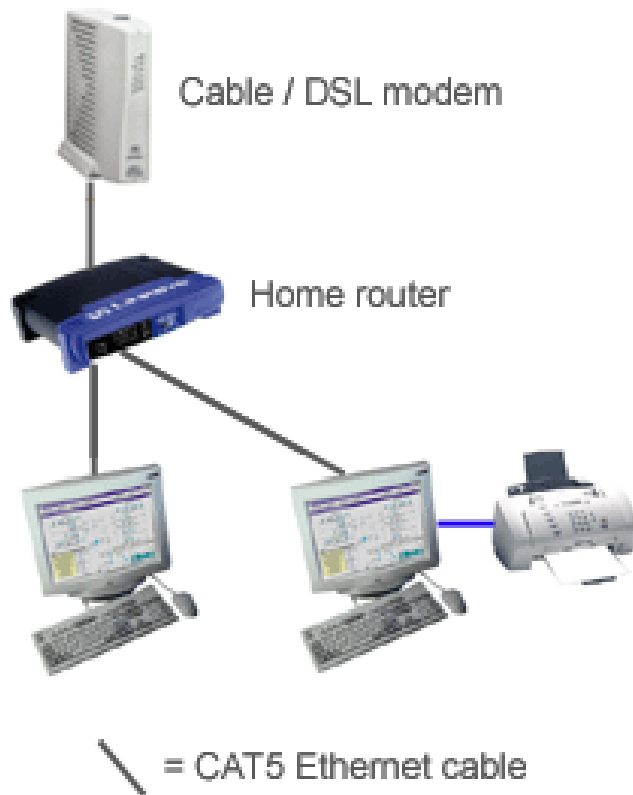
- Limited ports available for Ethernet Cable
- Range: 100 meters
- Speed: 100 Mbps

Set Up

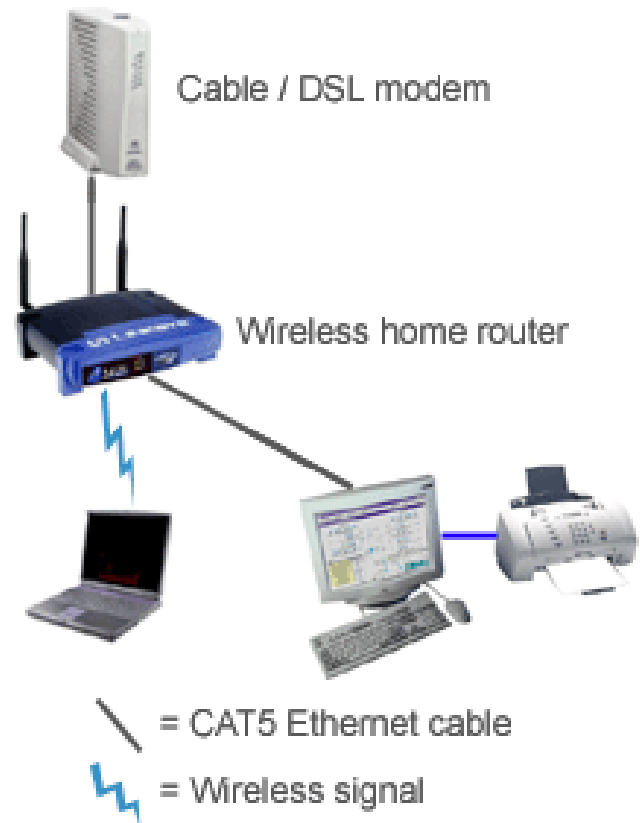
- [Microsoft XP Directions](#)
- Must be done on every computer.

Summary

Home Network (wired)



Home Network (wireless)



References

- “How to Set Up a Home Network.” PC Guidebook. 2006. Kelso Consulting Group, LLC. 3 December 2008 <<http://www.pcguidebook.com/homenetwork.asp>>.
- Saito, Scotty. Personal Interview. 4 December 2008.
- “Set up your computer for home networking.” Windows XP. 2008. Microsoft Corporation. 3 December 2008 <<http://www.microsoft.com/windowsxp/using/networking/setup/homenet.mspx>>.