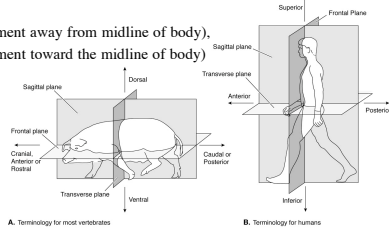


### Anatomical Reference Terminology

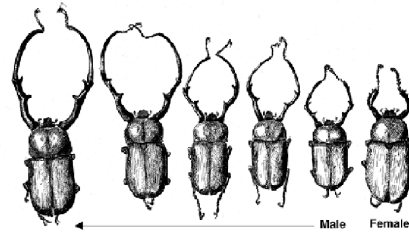
- Note differences between quadrupeds and bipeds, especially terminology related to head. See fig. 1-13.
- Limbs and other long things attached to body: proximal vs. distal
- Antagonistic motions:
  - Flexion (bending of two parts toward each other)/ Extension (away)
  - Protraction (moves relatively forward), retraction (relatively backwards)
  - Abduction (movement away from midline of body),
  - Adduction (movement toward the midline of body)



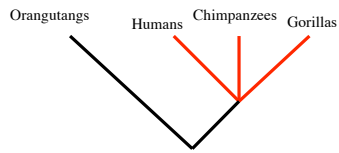
Planes of section

A. Terminology for most vertebrates B. Terminology for humans

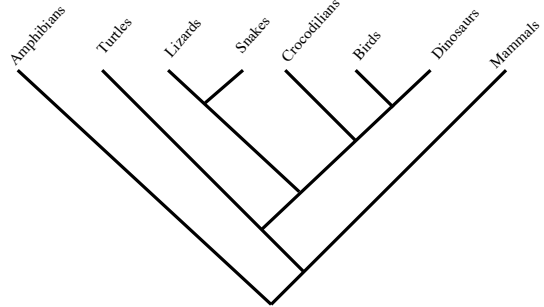
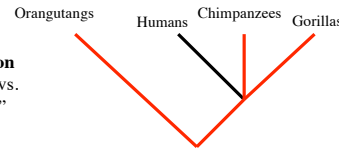
Allometric growth of mandibles in males.  
Mandibles grow at a much faster rate than body size.



### Phylogeny



### Classification "Pongidae" vs. "Hominidae"



"Reptiles" are **paraphyletic** because birds are excluded

(turtles, snakes and lizards) are paraphyletic, but (croc, birds, and dinosaurs) form a monophyletic group