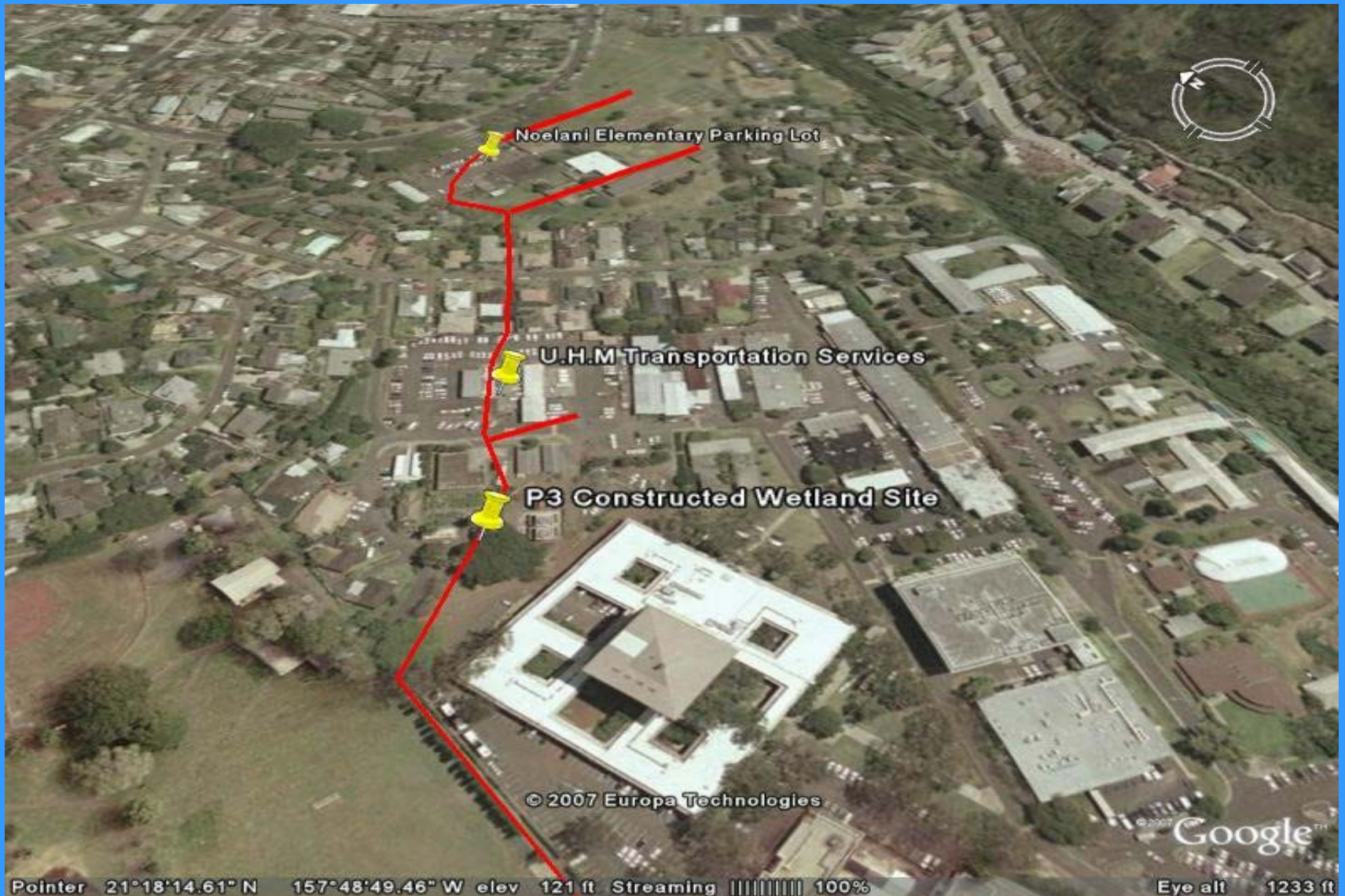


# **P3 Project – Possible Pollutants and its Sources**



Area for constructed wetland  
(taken from:

<http://www.ctahr.hawaii.edu/nrem/capstone/2007/Assessing%20Native%20Plants%20for%20a%20Constructed%20Wetland.pdf>





Organic material, nutrients and pesticides gardening



Pipe connection: cannot find it in the map





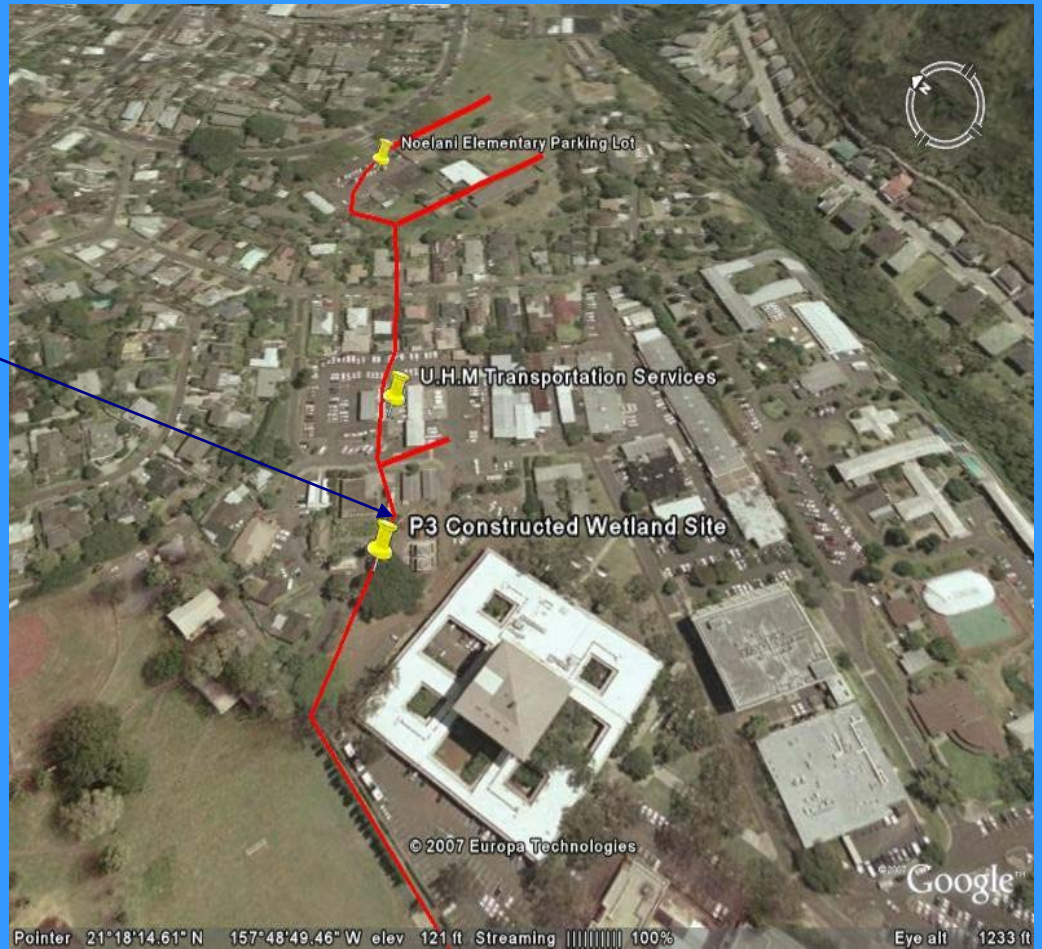
Metal





Sediment





Steep slope.

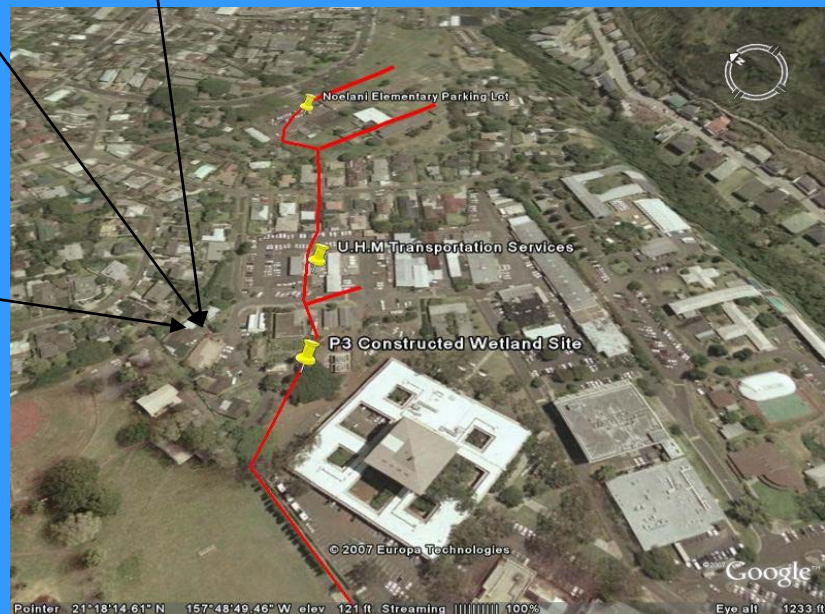
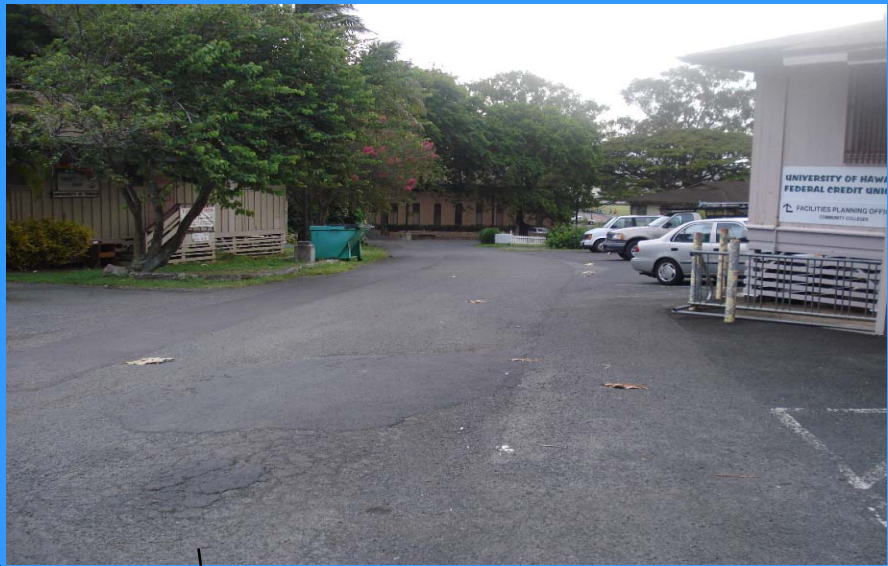
Possible pollutants: sediment, oil (from cars), toxic chemicals from vehicles





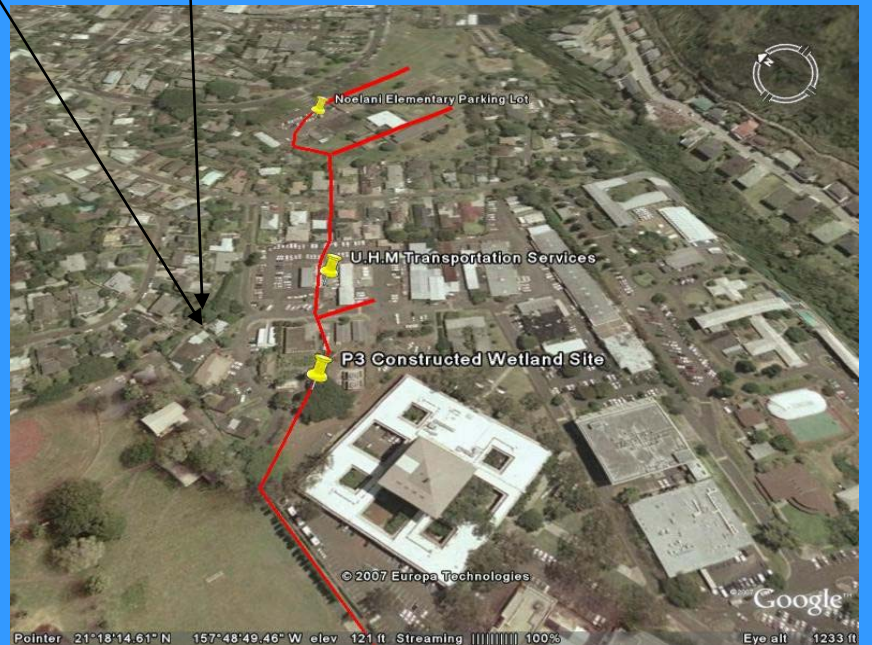
Gasoline, oil, toxic chemicals from vehicles





Adjacent area – the runoff will not go directly to the pipe, however it will certainly go to the wetland or the canal due to the steep slope.





Bare and covered soil with UNKOWN SYSTEM.  
Possible pollutants: sediment and organic material.





Houses drainage system.  
It will runoff into the wetland due to the  
steep slope





The picture does not show the house drainage system (showed by the arrow), however, this particular house drain the storm water directly into the canal





Taken from the back of Noelani School.  
Possible pollutant: sediment and organic material



Location: Noelani School.

The drainage system: mostly percolated to the vegetated soil.  
However, it has some UNKNOWN drainage system as well.







The slope steepness causes the storm water to run through Noelani School's parking lot.

Possible Pollutant: organic materials, gas or oil (from cars), animal waste.



# Possible pollutants

- Sediment
- Organic material
- Gasoline
- Oil
- Animal waste
- Metal
- toxic chemicals from vehicles
- nutrients and pesticides from gardening