



10 August 2007

INFORMATION PAPER

SUBJECT: Ala Wai Canal, Oahu, Hawaii

1. Purpose: To provide information on the subject project.
2. Points of Major Interest and Facts.

a. The Ala Wai Canal project is a multiple purpose project being investigated under Section 209 of the Flood Control Act of 1962 (Public Law 87-874). The Feasibility Cost Sharing Agreement (FCSA) was originally executed in January 2001 between the US Army Corps of Engineers and the State of Hawaii as represented by the Department of Land and Natural Resources (DLNR). The feasibility study is investigating and evaluating solutions to environmental degradation and flood control problems throughout the entire Ala Wai watershed (Manoa, Palolo, and Makiki drainages, including Waikiki and surrounding areas). Pending analysis of alternatives in the study, the potential construction costs have not been developed.

b. Amendment 1 of the FCSA was executed on 7 December 2006. The new feasibility study completion is scheduled for 2009 and cost estimate is \$5.1M, a \$3.6M increase over the original \$1.5M study. The DLNR has secured their entire share of the increased study cost. The FY06 Appropriation provided \$500,000 Federal contribution to the expanded study. The FY07 Work Plan provided \$300,000. The main output of the feasibility study will be a comprehensive integrated plan that recommends a coordinated approach by all Federal, State, and local agencies and the communities to improving overall watershed health.

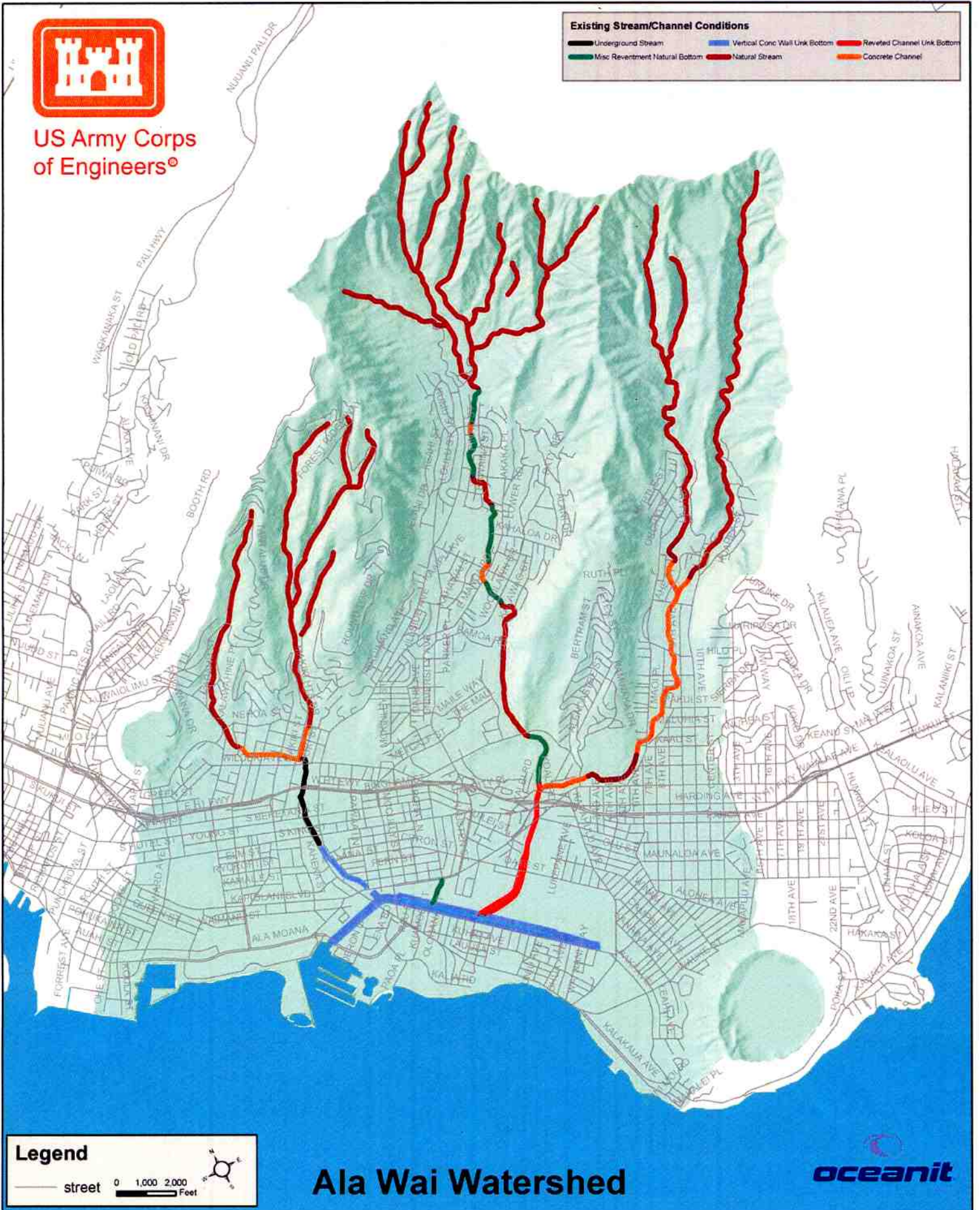
c. The Ala Wai Canal is a two-mile long man-made waterway constructed during the 1920's to create and protect the Waikiki area on the island of Oahu. The Ala Wai watershed encompasses more than 16 square miles. The carrying capacity of the Canal has been significantly reduced by accumulation of silt and debris from the Manoa, Palolo, and Makiki streams. During the November 1965 and December 1967 storms and passage of Hurricane Iniki in 1992, the Ala Wai Canal was overtopped causing flooding in the Waikiki district. The 30 October 2004 storm in Manoa is estimated to have caused over \$100M in damages to property and irreplaceable documents in the University of Hawaii's library, causing the community and agencies to seek the expansion of the Ala Wai Canal project for flood mitigation measures in the upper stream areas.



US Army Corps of Engineers®

Existing Stream/Channel Conditions

- Underground Stream
- Vertical Conc Wall Link Bottom
- Reveted Channel Link Bottom
- Misc Revestment Natural Bottom
- Natural Stream
- Concrete Channel



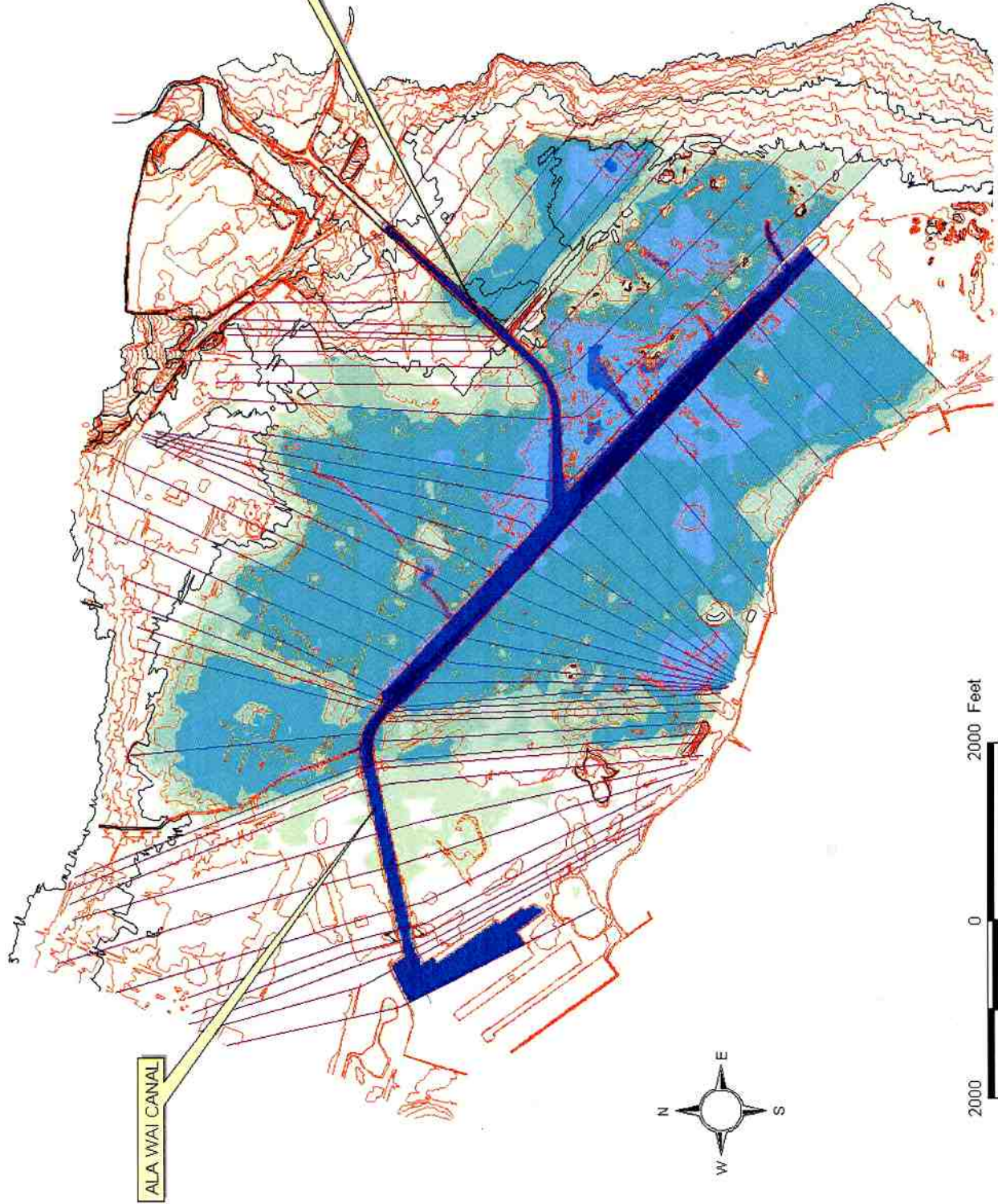
Legend

street 0 1,000 2,000 Feet



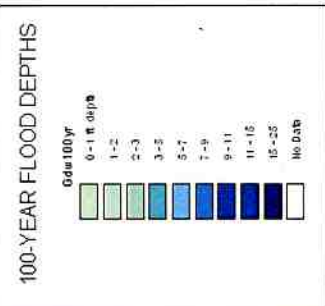
Ala Wai Watershed





MANOA-PALOLO
DRAINAGE CANAL

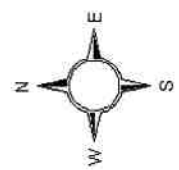
ALA WAI CANAL



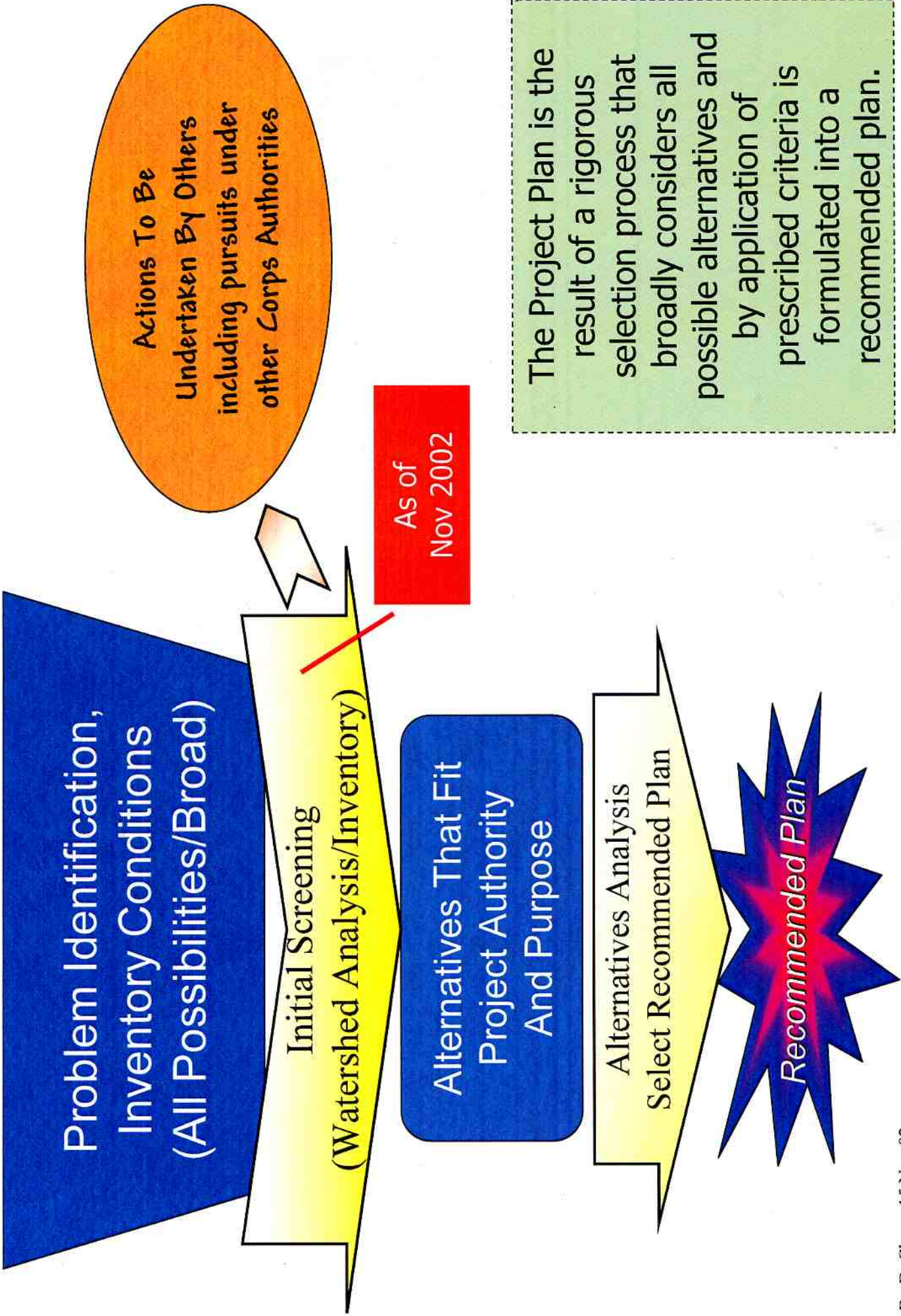
ALA WAI CANAL FLOOD CONTROL
PLANNING ASSISTANCE STUDY

100-YEAR FLOOD PLAIN
EXISTING CONDITIONS
MAP 2

U.S. ARMY ENGINEER DISTRICT, HONOLULU

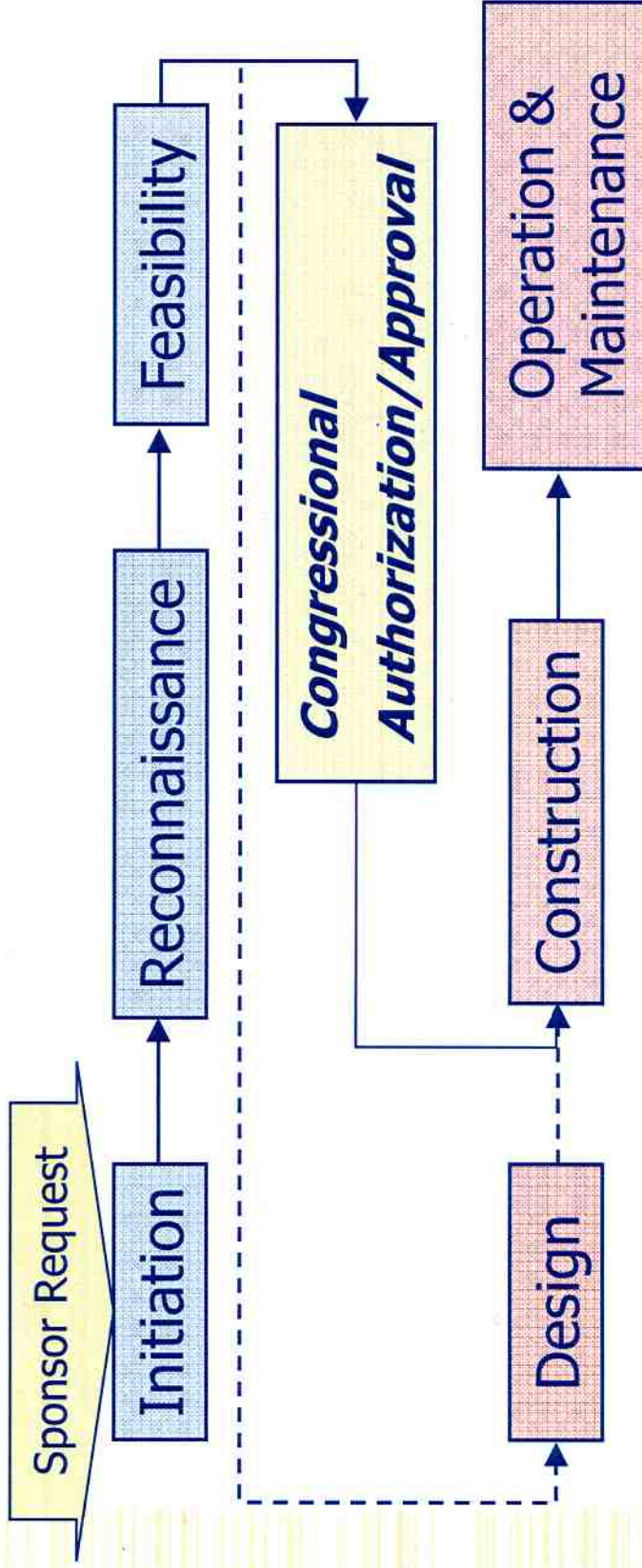


Ala Wai Canal Project Feasibility Study, Alternatives Analysis





PROJECT DEVELOPMENT PROCESS



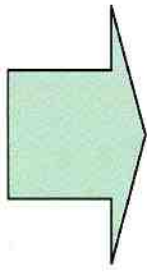
5 to 10 years

Ala Wai Canal Project
Feasibility Study

Flood
Control

*Alternatives
Analysis*

Ecosystem
Restoration



Washington DC