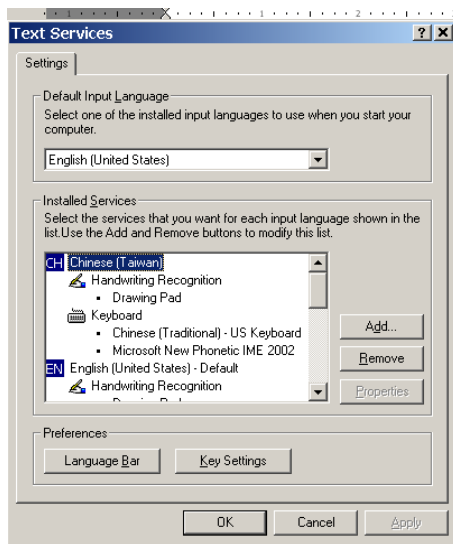
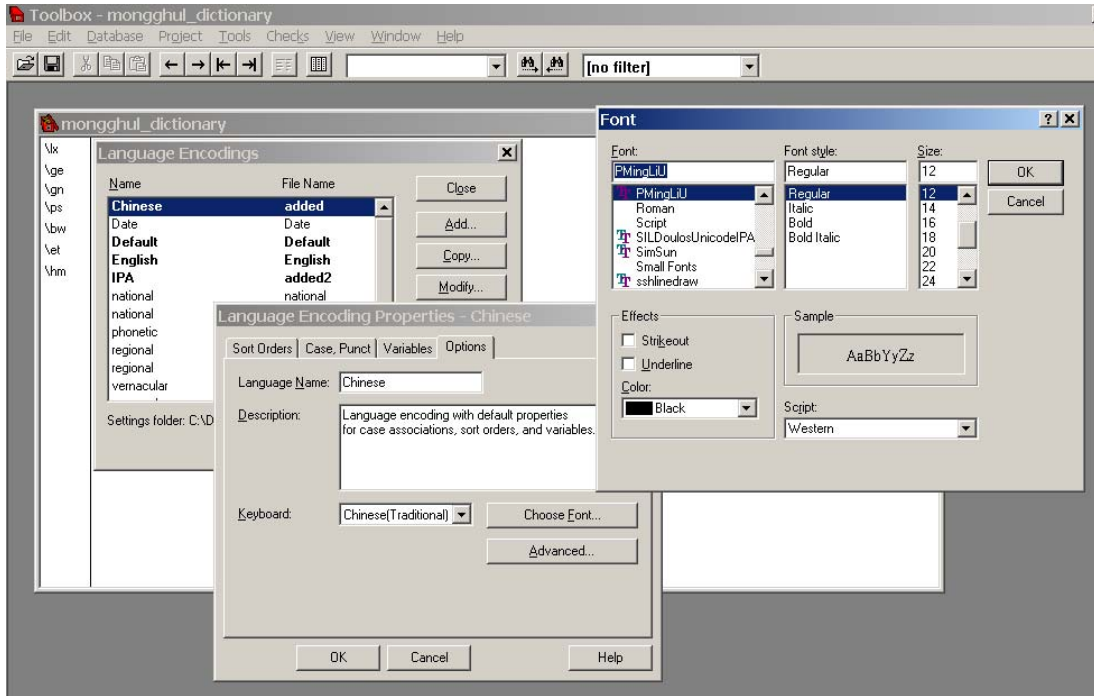


Using Fonts in Toolbox

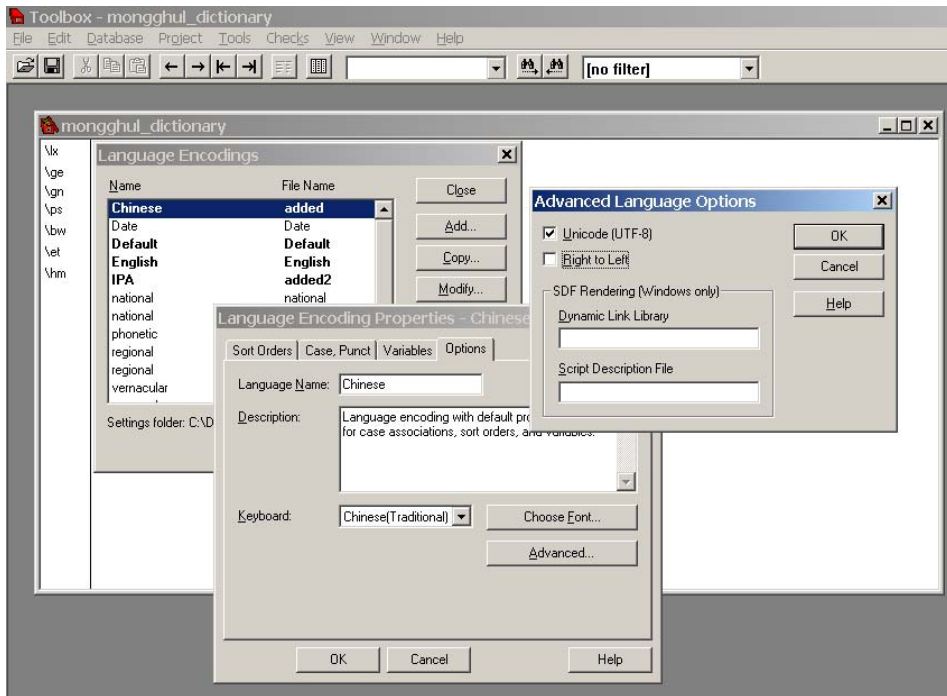
1. Make sure your computer has the font and the language you want to use.
 - a) fonts folder
 - go to Start
 - Settings
 - Control Panel
 - Fonts
 - b) language settings
 - right-click on the blue square for English 'EN'
 - click on Settings
 - make sure that your language is in the list. If it is not there, add it



- make sure you have any IMEs you need
2. Create/open a project in Toolbox and set up the fields you want to have.
 3. set up the languages you will need:
 - go to Project > Language Encodings
 - you can either modify the existing settings, or create new ones
 - select a language encoding
 - click on modify
 - select the options tag
 - select your keyboard
 - select your font in Choose Font

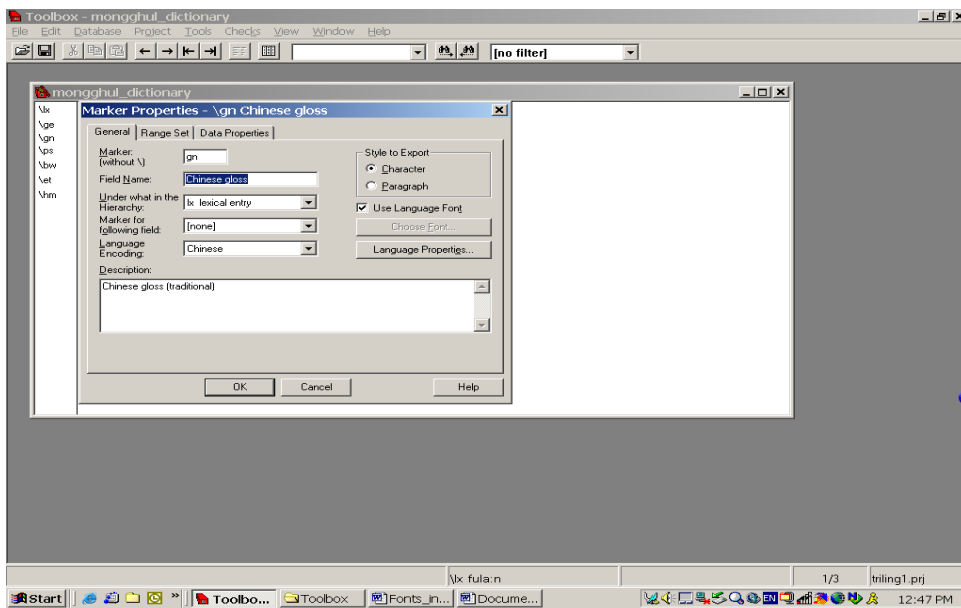


- go to Advanced. If you are working with a Unicode font, make sure to check Unicode (UTF-8)



- if you are creating a new setting, you may want to give it a name

4. for each field where you want to use a special font, do the following:
 - right click the field marker
 - In the Language Encoding field, select the language encoding you want
 - make sure that Use Language Font is checked



5. To make sure that all unicode fonts export properly (including IPA, using Arial Unicode MS, or SIL Doulos Unicode IPA), make sure to set your national, regional and vernacular language encodings to Unicode (UTF-8), whether or not you are using these language encodings for your dictionary.

If the exported document still does not display your font properly, changing the style formatting may help¹.

In the exported document,

- go to Format
- go to Style
- select the style of the field for which you are having font problems
- click on Modify
- click Format
- in the drop-down menu, select Font
- select the font you need in the Font section
- click OK

[note: this works best with the current test version, 1.4. I can get Chinese to work, including IMEs 1.4t is available at: <http://www.sil.org/computing/toolbox/testversion>]

by Burgel R.M. Faehndrich, 5/11/06

¹ Thanks to Tsz-Him Tsui for finding this solution and explaining to me.