

6

5

4

3

2

1

D

D

C

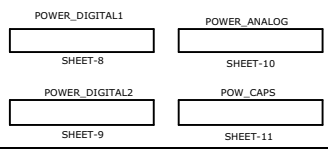
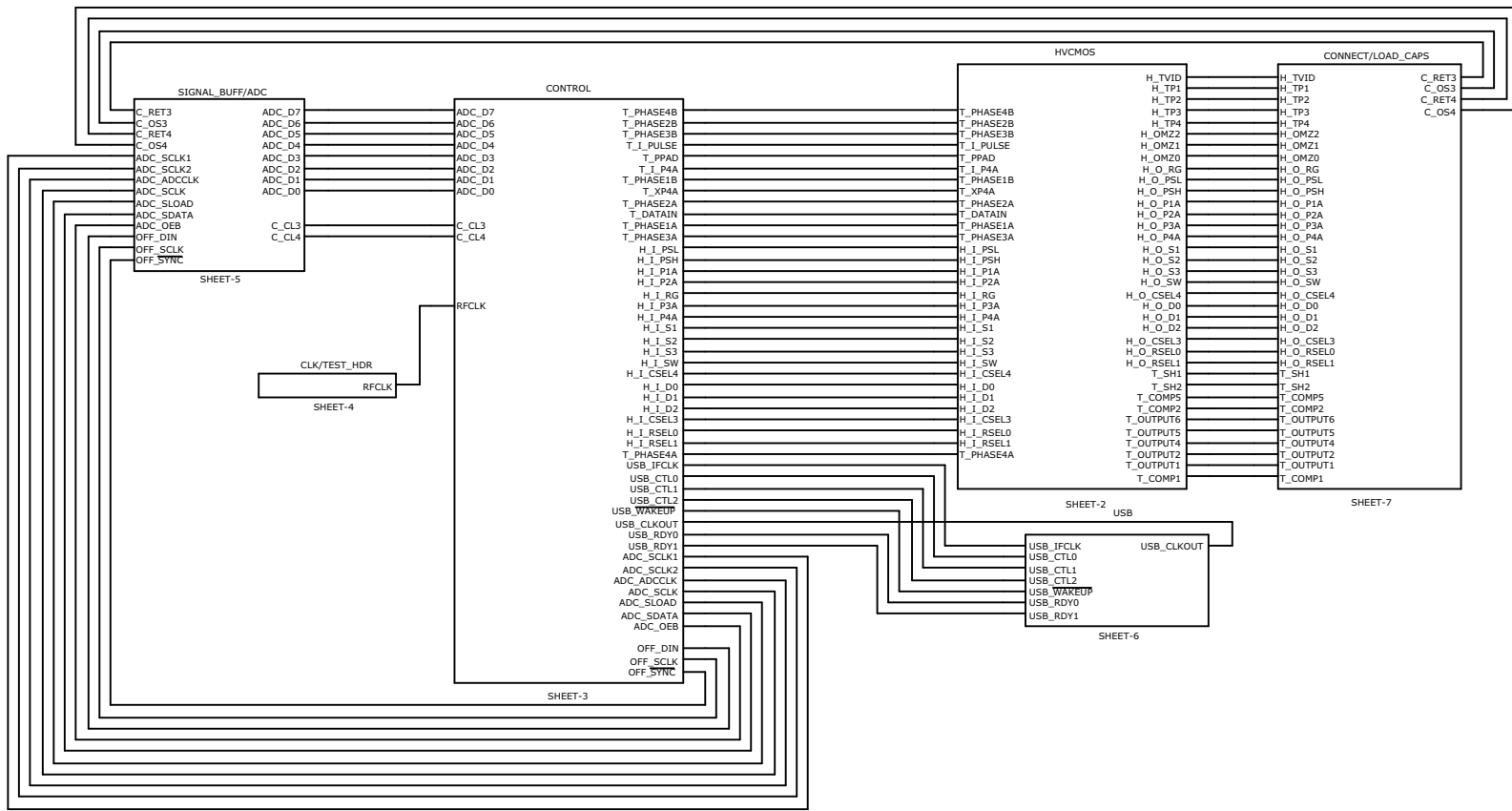
C

B

B

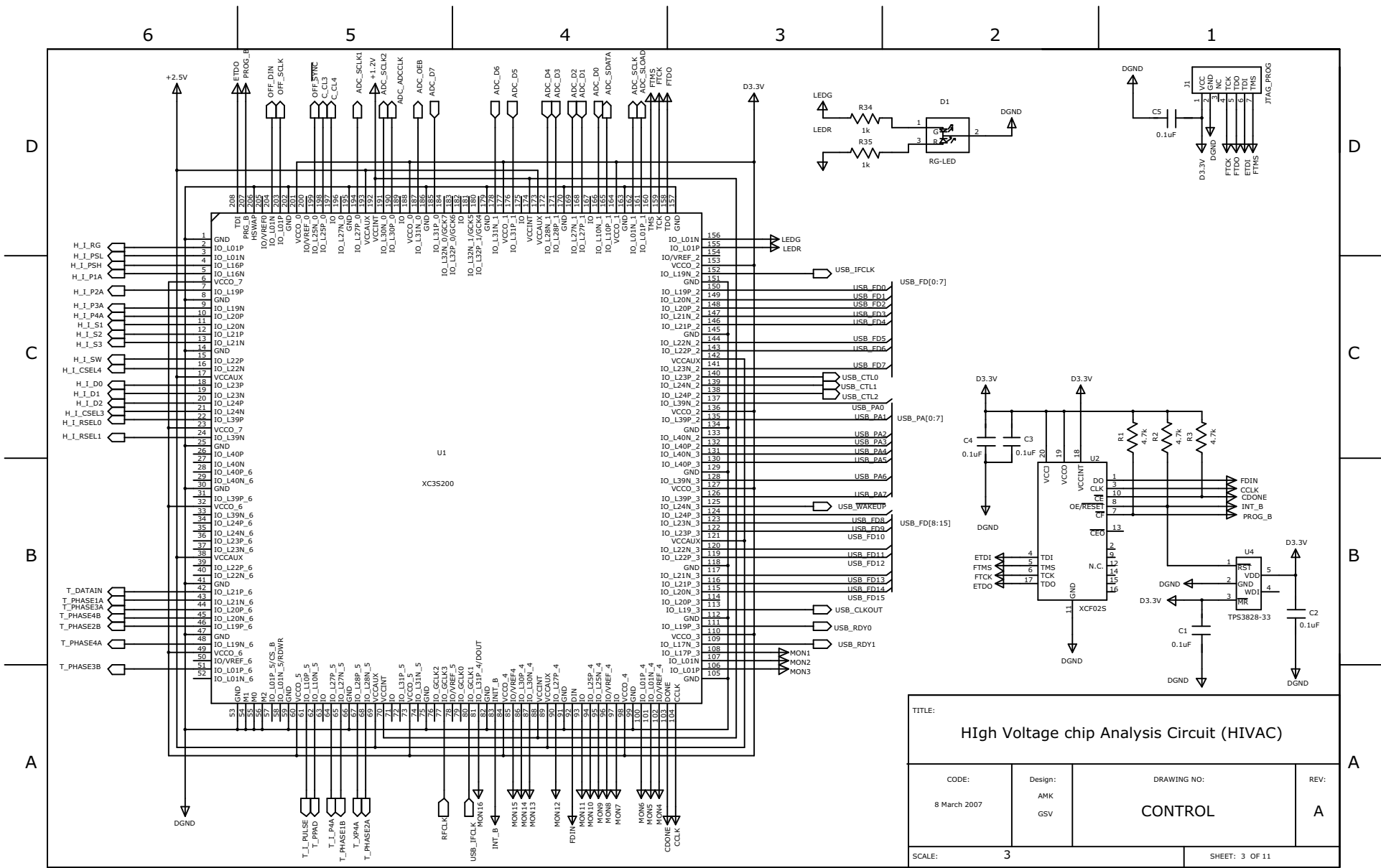
A

A



TITLE: <b>HIGH Voltage chip Analysis Circuit (HIVAC)</b>			
Date: 8 March 2007	Designer: AMK GSV	DRAWING NO: <b>TOP</b>	REV: <b>A</b>
SCALE:			SHEET: 1 OF 11





TITLE: <b>HIVAC</b>			
CODE: 8 March 2007	Design: AMK GSV	DRAWING NO: <b>CONTROL</b>	REV: <b>A</b>
SCALE: 3		SHEET: 3 OF 11	

6

5

4

3

2

1

D

D

C

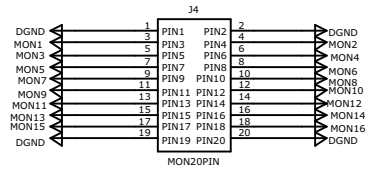
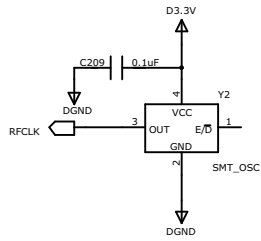
C

B

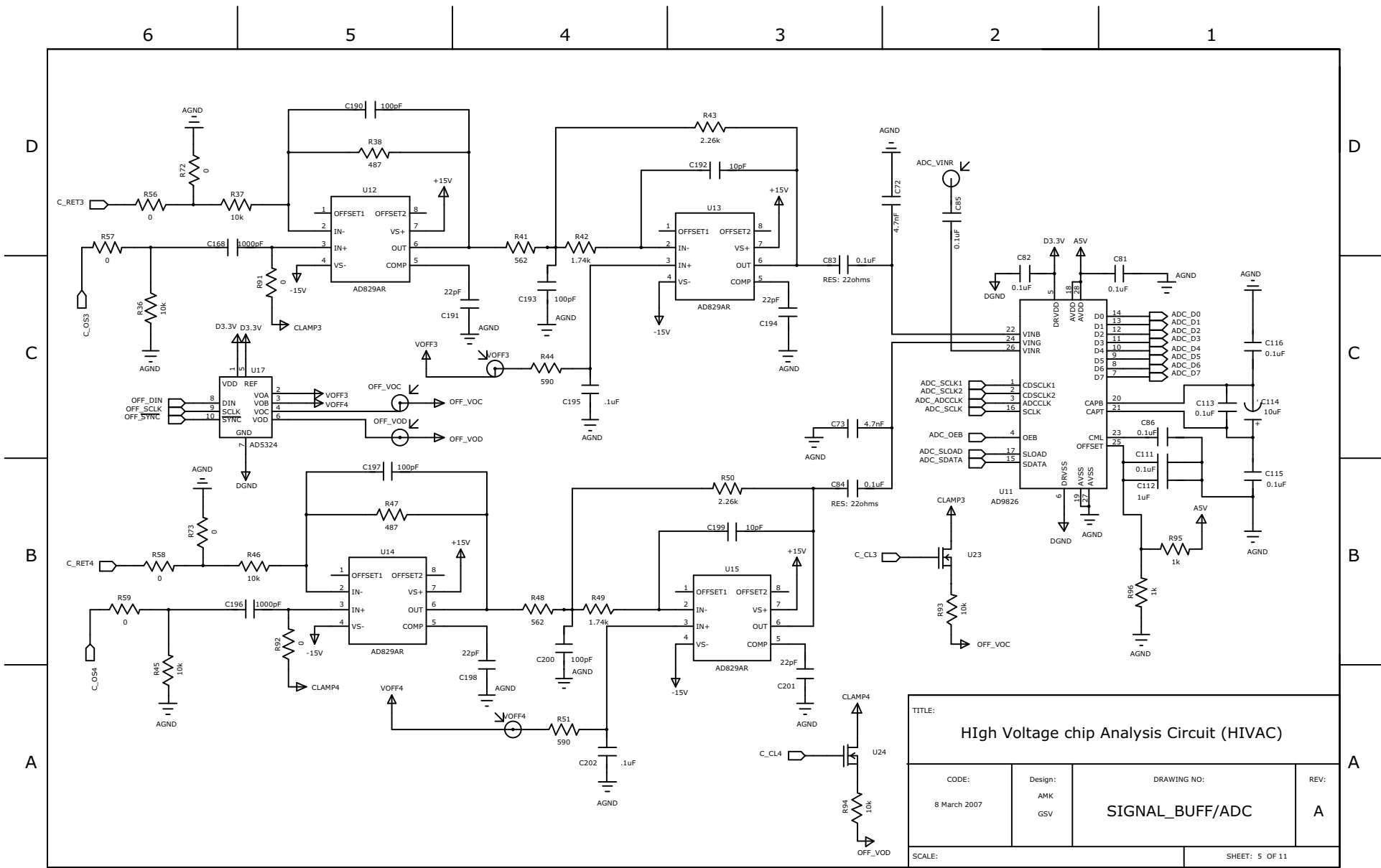
B

A

A



TITLE: High Voltage chip Analysis Circuit (HIVAC)			
CODE: 8 March 2007	Design: AMK GSV	DRAWING NO: CLK/TEST_HDR	REV: A
SCALE:		SHEET: 4 OF 11	



TITLE: <b>HIVAC</b> High Voltage chip Analysis Circuit (HIVAC)			
CODE: 8 March 2007	Design: AMK GSV	DRAWING NO: <b>SIGNAL_BUFF/ADC</b>	REV: <b>A</b>
SCALE:		SHEET: 5 OF 11	

6

5

4

3

2

1

DATE:

D

D

C

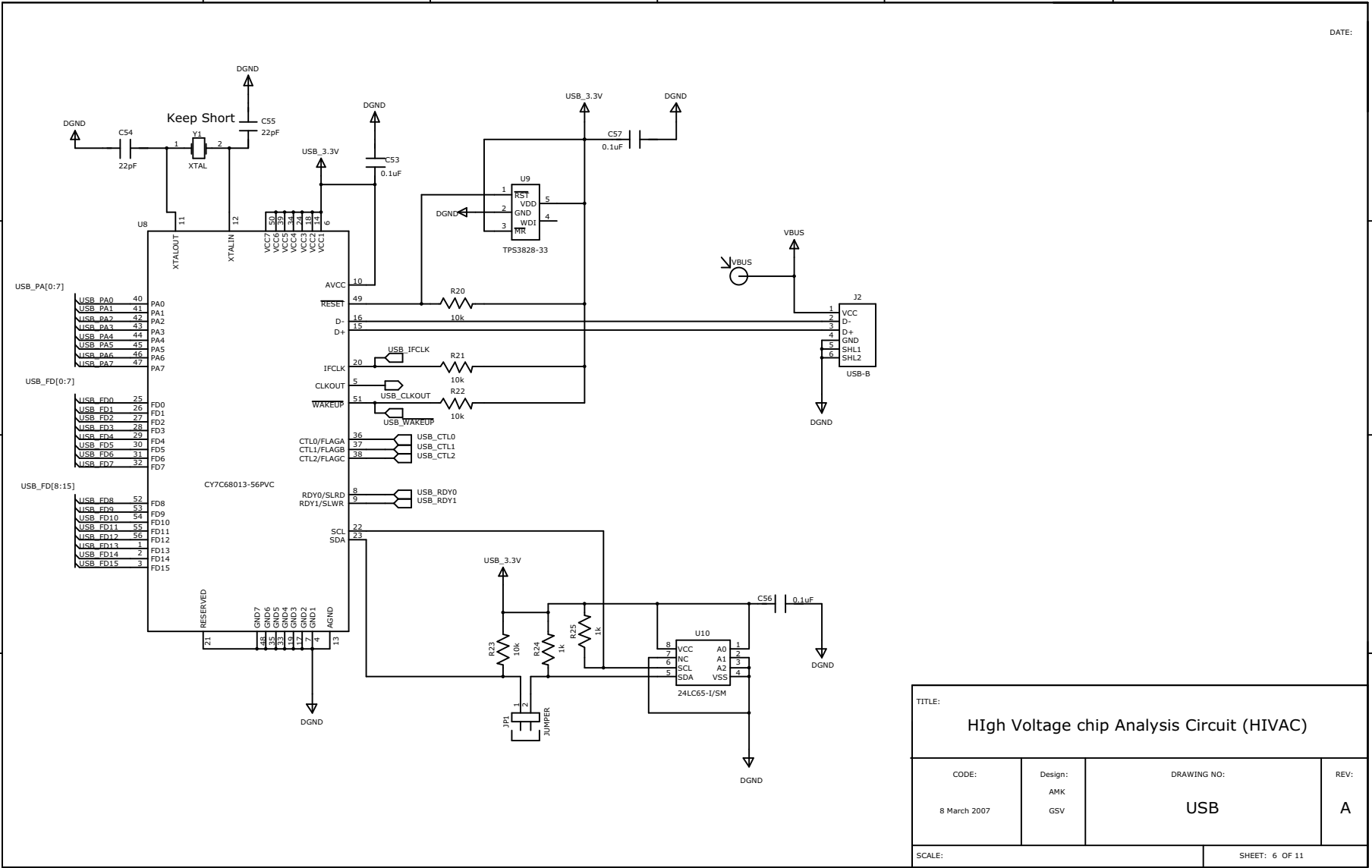
C

B

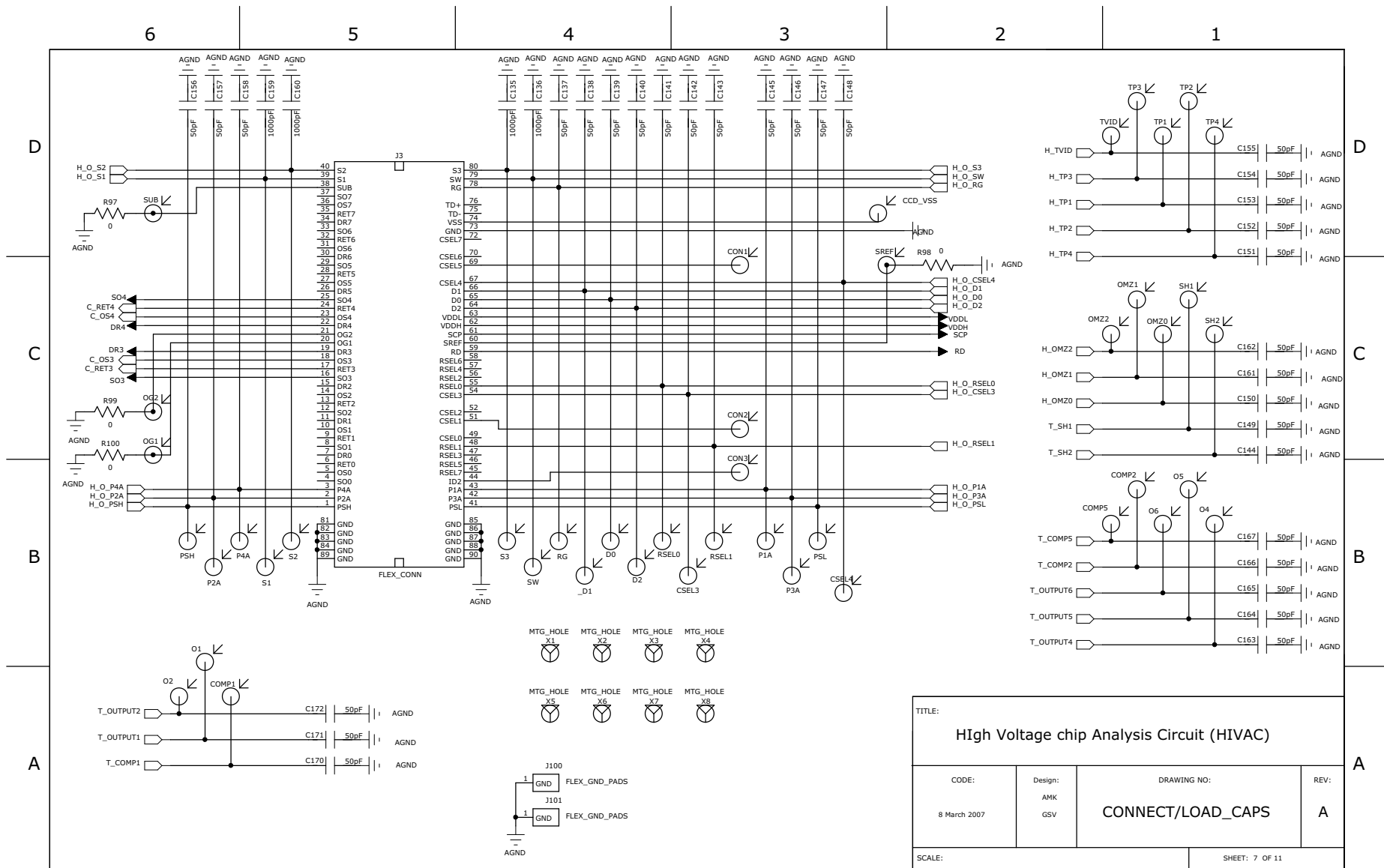
B

A

A



TITLE: <b>HIgh Voltage chip Analysis Circuit (HIVAC)</b>			
CODE: 8 March 2007	Design: AMK GSV	DRAWING NO: <b>USB</b>	REV: <b>A</b>
SCALE:		SHEET: 6 OF 11	



6

5

4

3

2

1

D

D

C

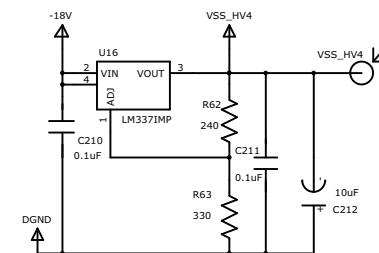
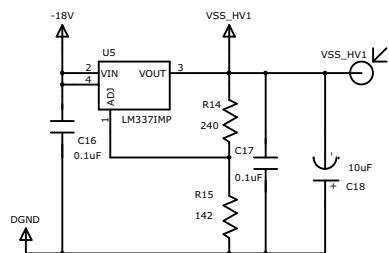
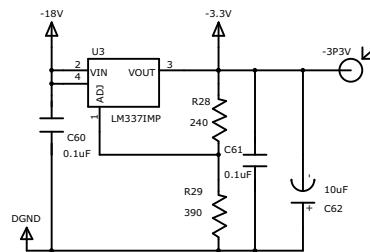
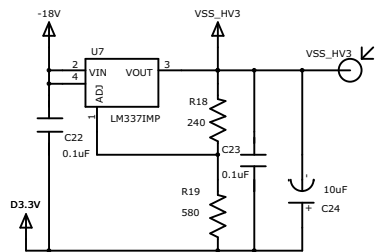
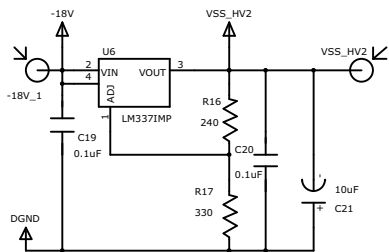
C

B

B

A

A



VOLTAGE	VALUE
VSS_HV1	-2V
VSS_HV2	-3V
VSS_HV3	-1V
VSS_HV4	-3V

TITLE:

HIgh Voltage chip Analysis Circuit (HIVAC)

CODE:

8 March 2007

Design:

AMK  
GSV

DRAWING NO:

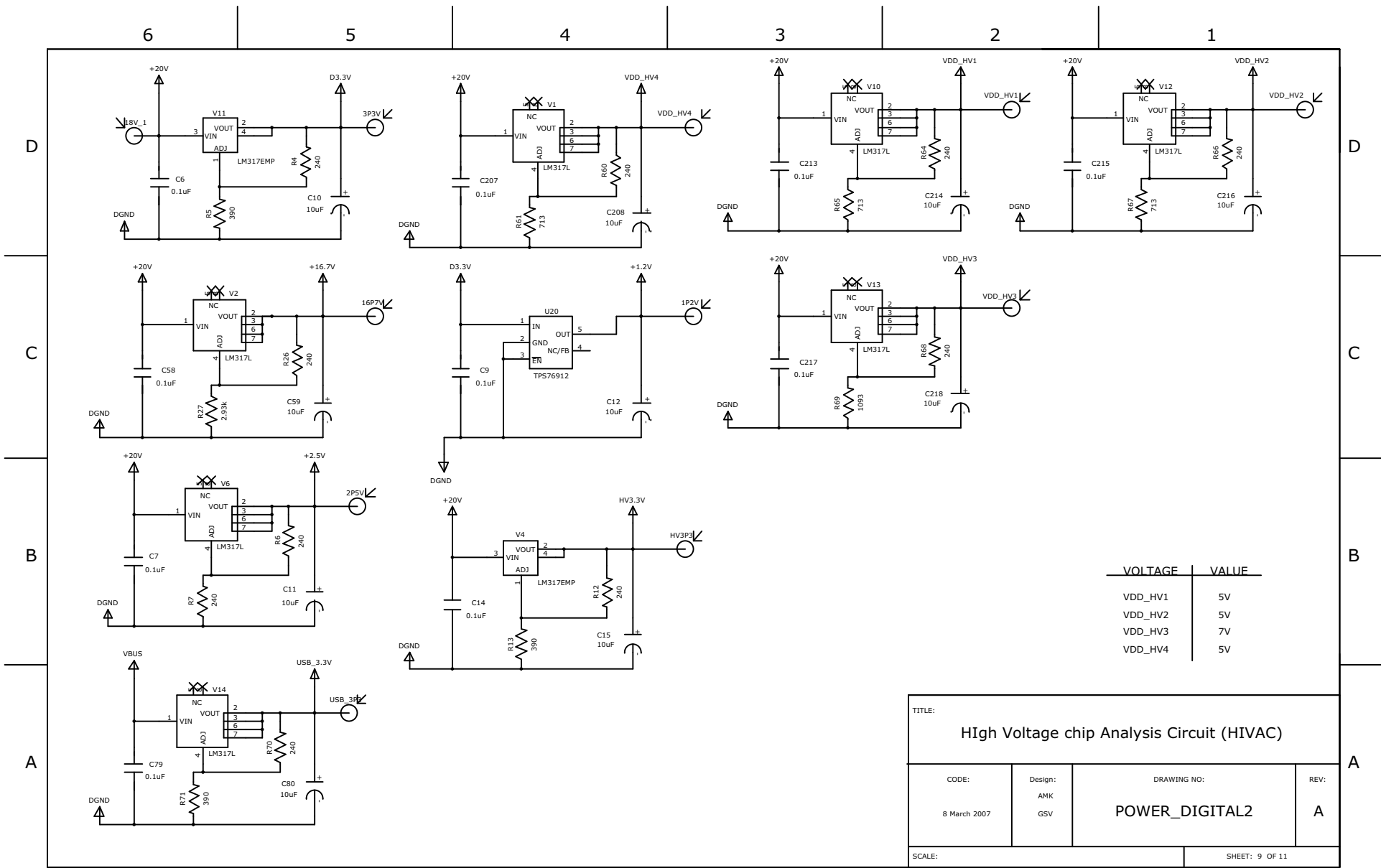
POWER\_DIGITAL1

REV:

A

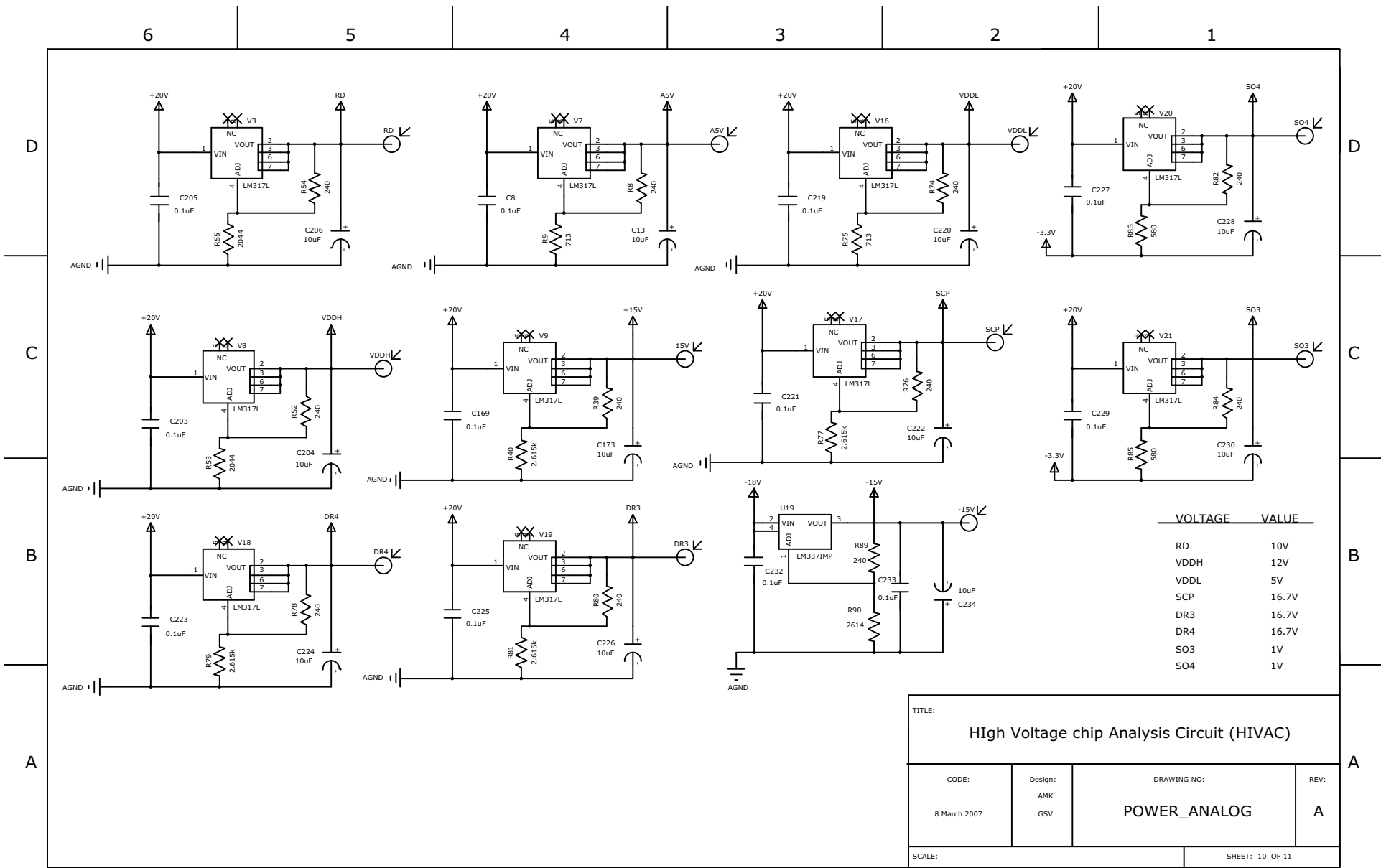
SCALE:

SHEET: 8 OF 11



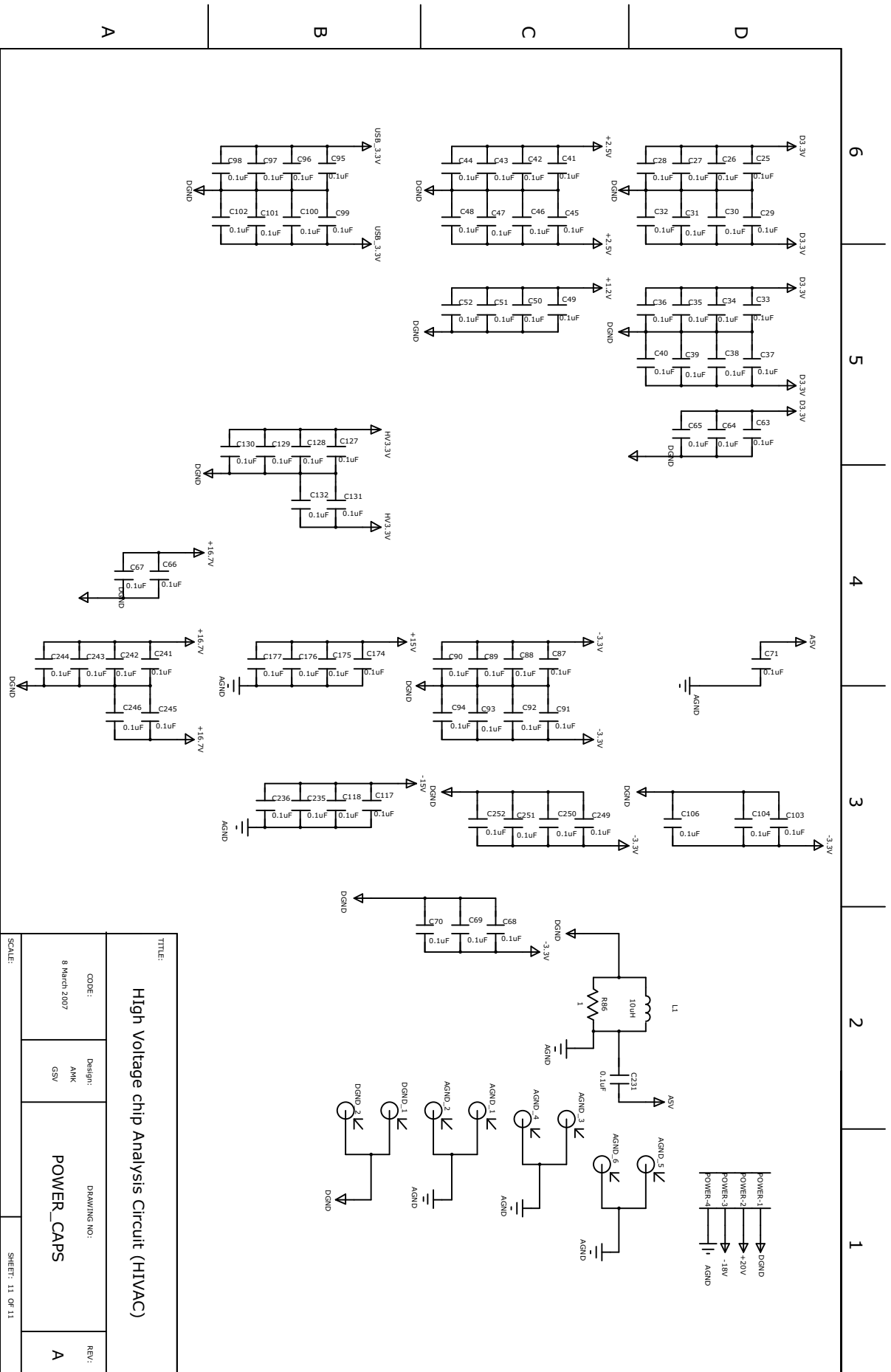
VOLTAGE	VALUE
VDD_HV1	5V
VDD_HV2	5V
VDD_HV3	7V
VDD_HV4	5V

TITLE: <b>HIGH Voltage chip Analysis Circuit (HIVAC)</b>			
CODE: 8 March 2007	Design: AMK GSV	DRAWING NO: <b>POWER_DIGITAL2</b>	REV: <b>A</b>
SCALE:		SHEET: 9 OF 11	



VOLTAGE	VALUE
RD	10V
VDDH	12V
VDDL	5V
SCP	16.7V
DR3	16.7V
DR4	16.7V
SO3	1V
SO4	1V

TITLE: <b>High Voltage chip Analysis Circuit (HIVAC)</b>			
CODE: 8 March 2007	Design: AMK GSV	DRAWING NO: <b>POWER_ANALOG</b>	REV: <b>A</b>
SCALE:		SHEET: 10 OF 11	



TITLE: <b>High Voltage chip Analysis Circuit (HIVAC)</b>	
CODE: B March 2007	Design: ANK GSV
DRAWING NO: <b>POWER_CAPS</b>	
SCALE:	REV: A
SHEET: 11 OF 11	